

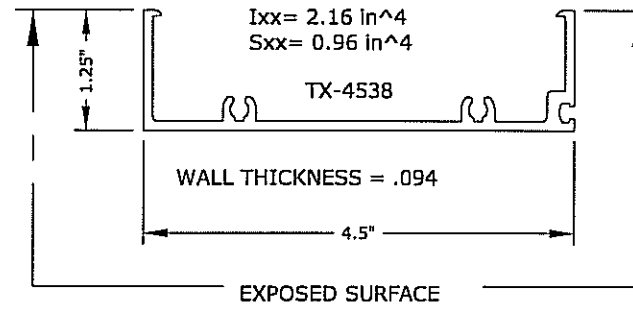
ALUMIWALL 4500 STOREFRONT SYSTEM

LARGE MISSILE IMPACT RESISTANT

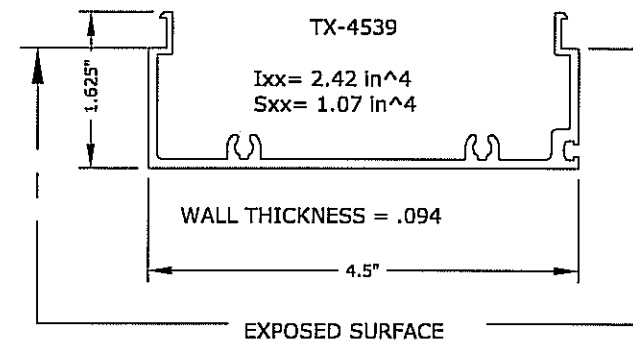
GENERAL NOTES:

1. THE SYSTEM DESCRIBED HEREIN HAS BEEN DESIGNED AND TESTED IN ACCORDANCE WITH THE 2007 FLORIDA BUILDING CODE, FOR USE WITHIN AND OUTSIDE THE HIGH VELOCITY HURRICANE ZONE (HVHZ), PER TAS 201 / 202 / 203 & ASTM STANDARDS E330, E1886 & E1996.
2. NO 33-1/3% INCREASE IN ALLOWABLE STRESS HAS BEEN USED IN THE DESIGN OF THIS SYSTEM. WIND LOAD DURATION FACTOR $C_d=1.6$ HAS BEEN USED FOR WOOD ANCHOR DESIGN.
3. POSITIVE AND NEGATIVE DESIGN PRESSURES CALCULATED FOR USE WITH THIS SYSTEM SHALL BE DETERMINED BY OTHERS ON A JOB-SPECIFIC BASIS IN ACCORDANCE WITH THE GOVERNING CODE.
4. ALL ALUMINUM EXTRUSIONS SHALL BE 6063-T5 ALLOY, U.N.O. ALL STRUCTURAL SILICONE SHALL BE DOW CORNING 983 OR BONDIFLEX 402.
5. THE SYSTEM DETAILED HEREIN IS GENERIC AND DOES NOT PROVIDE INFORMATION FOR A SPECIFIC SITE. FOR SITE CONDITIONS DIFFERENT FROM THE CONDITIONS DETAILED HEREIN, A LICENSED ENGINEER OR REGISTERED ARCHITECT SHALL PREPARE SITE-SPECIFIC DOCUMENTS FOR USE IN CONJUNCTION WITH THIS DOCUMENT.
6. PERMIT HOLDER SHALL VERIFY THE ADEQUACY OF THE EXISTING STRUCTURE TO WITHSTAND SUPERIMPOSED LOADS. WOOD BUCKS (NOT BY ALUMIGLASS) SHALL BE ANCHORED PROPERLY TO TRANSFER LOADS TO THE EXISTING STRUCTURE.
7. STOREFRONT FRAMING GLAZED WITH 9/16" LAMINATED GLASS IS LARGE MISSILE IMPACT APPROVED. NO WIND-BORNE DEBRIS PROTECTION REQUIRED FOR ALL INSTALLATIONS.
8. ANCHORS AND FASTENERS SHALL BE CORROSIVE RESISTANT AND SHALL CONFORM TO THE BUILDING CODE SPECIFIED ABOVE.
9. ALL STEEL IN CONTACT WITH ALUMINUM SHALL BE PAINTED OR PLATED.

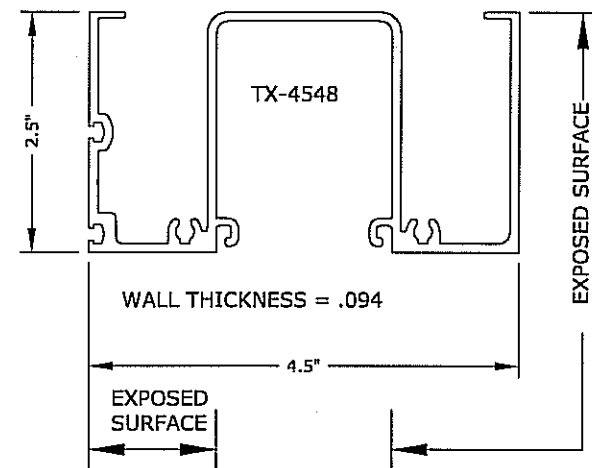
FRAMING COMPONENTS:



MALE INTERMED MULL/ JAMB

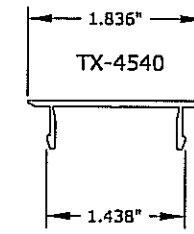


FEMALE INTERMED MULL/JAMB

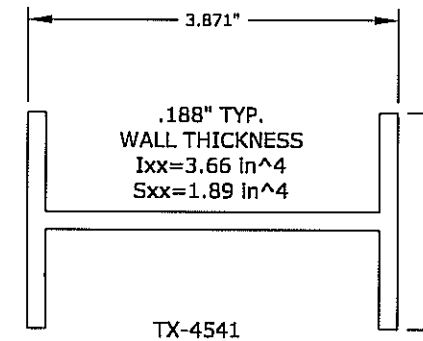


HEAD & SILL

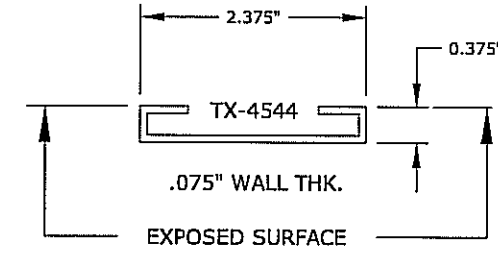
EXPOSED SURFACE



FILL FOR HEAD & SILL



MULL REINF.



CAP (OPTIONAL)

FRANK L. BERNARDO, P.E.
 #00046549
 03/01/2010
 NO. 16549
 STATE OF FLORIDA
 PROFESSIONAL ENGINEER
 ENGINEERING EXPRESS, INC.
 160 SW 12th AVENUE #106
 DEERFIELD BEACH, FL 33442
 PH: (954) 354-0660 FAX: (954) 354-0443
 WWW.ENGEXP.COM
 CERT. OF AUTH. #885
 A FRANK L. BERNARDO, P.E., INC. INNOVATION

LUMIGLASS, INC.
 801 N.W. 36th Street, Suite 100 • Boca Raton, FL 33431
 (861) 750-2300 Fax: (861) 750-8711
 ALUMIWALL 4500 SERIES STOREFRONT SYSTEM
 LARGE MISSILE IMPACT RESISTANT
 FLORIDA STATEWIDE APPROVAL

REMARKS	DRWN/CHKD	DATE
INIT ISSUE	CL FBL	02/18/04
2004 FBC	CL FBL	09/22/05
ADDL GLAZING OPTION	KL CL	07/09/07
2007 FBC	AML CL	12/19/08
REV. PER ADDL TESTING	KL FBL	03/01/10

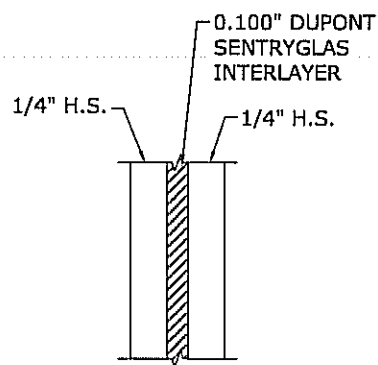
THIS DOCUMENT IS THE PROPERTY OF ENGINEERING EXPRESS AND SHALL NOT BE REPRODUCED IN WHOLE OR PART WITHOUT WRITTEN CONSENT OF THE ENGINEERING EXPRESS. ALL RIGHTS, INCLUDING, WITHOUT LIMITATION, PATENT RIGHTS, ARE RESERVED TO THE ENGINEERING EXPRESS. NO PART OF THIS DOCUMENT IS TO BE REPRODUCED OR TRANSMITTED IN ANY FORM OR BY ANY MEANS, ELECTRONIC OR MECHANICAL, INCLUDING PHOTOCOPYING, RECORDING, OR BY ANY INFORMATION STORAGE AND RETRIEVAL SYSTEM.

COPYRIGHT ENGINEERING EXPRESS
 04-ALU-0013
 SCALE: 06
 PAGE DESCRIPTION:
 1 OF 5

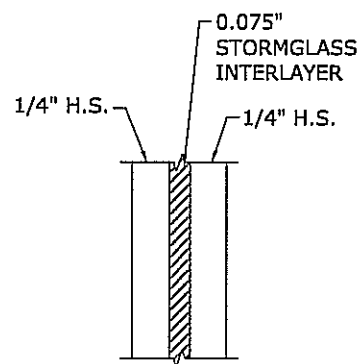
F:\01 Project Files\Alumiglass (ALU)\2004 Jobs\04-015-0013 Alumiwall 4500 Storefront, LMI (FSA).dwg
 kelih
 03/01/2010 - 5:17pm

GLAZING SCHEDULE

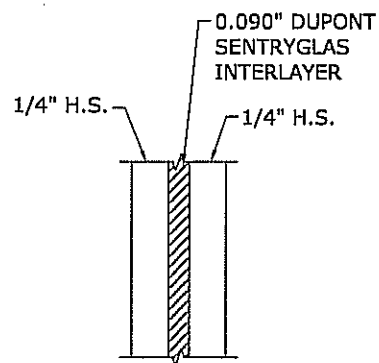
- ① 1/4" H.S. / 0.100" DUPONT SENTRYGLAS INTERLAYER / 1/4" H.S.
- ② 1/4" H.S. / 0.075" STORMGLASS INTERLAYER / 1/4" H.S.
- ③ 1/4" H.S. / 0.090" DUPONT SENTRYGLAS INTERLAYER / 1/4" H.S.



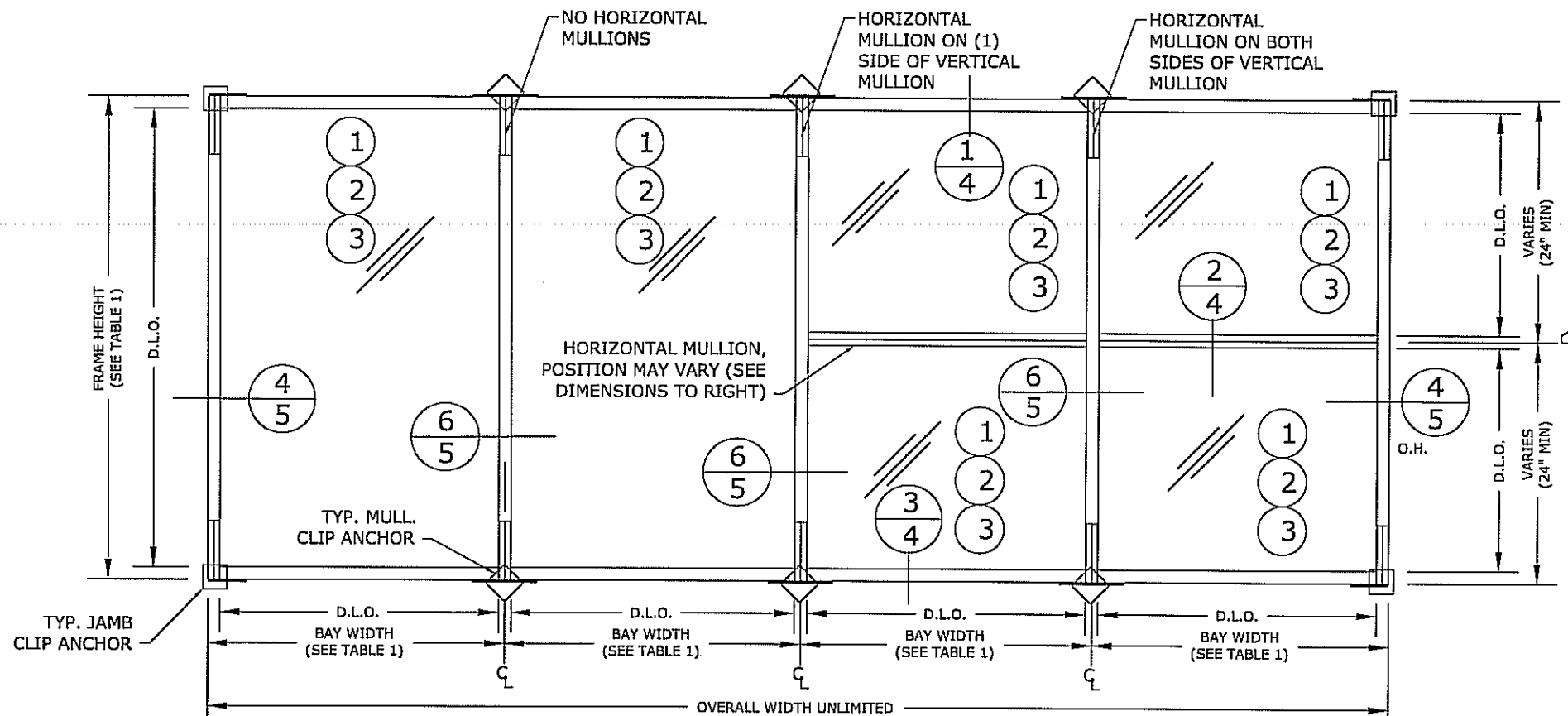
GLAZING TYPE ①



GLAZING TYPE ②

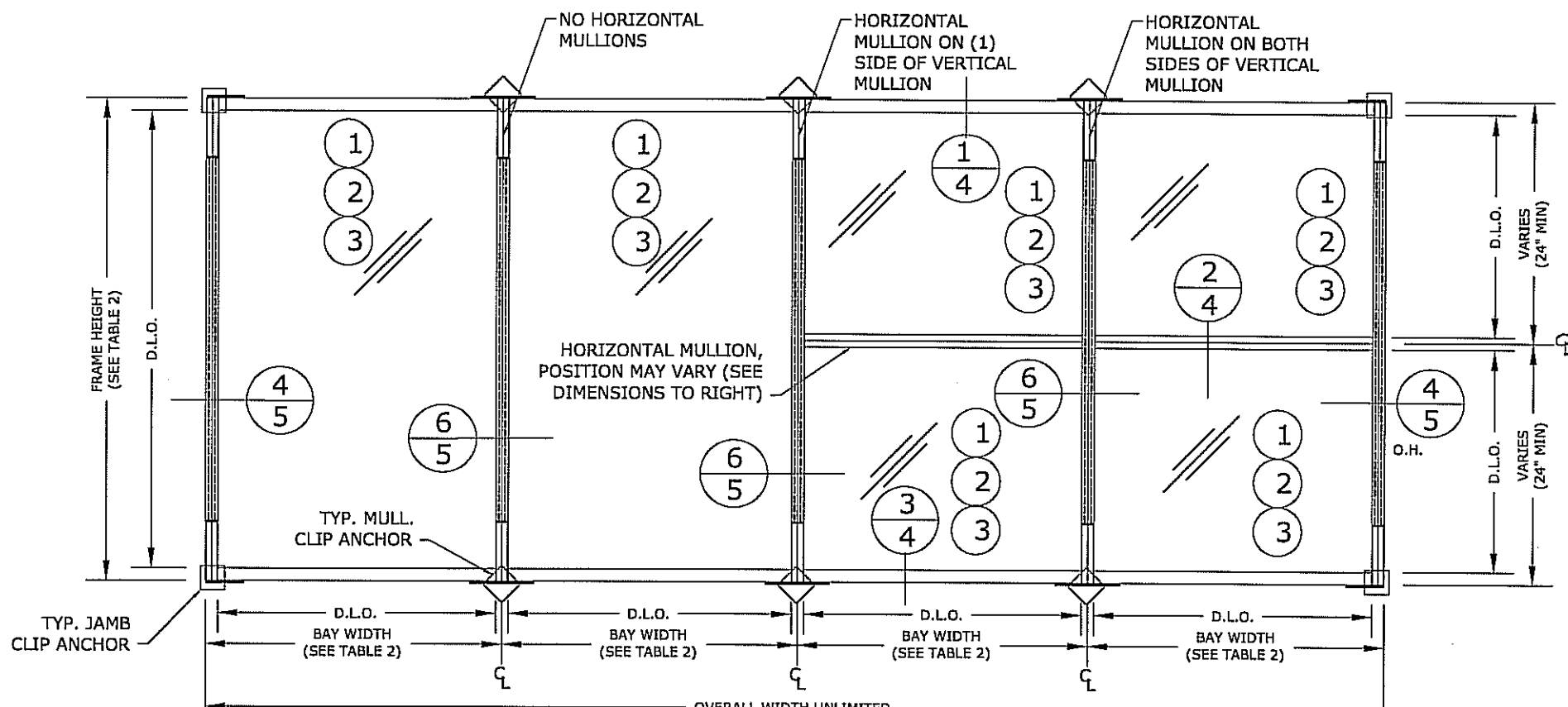


GLAZING TYPE ③



A TYP. ELEVATION (NO REINFORCEMENT)

SCALE: 3/8" = 1'-0"



B TYP. ELEVATION (FULL VERTICAL REINFORCEMENT)

SCALE: 3/8" = 1'-0"

FRANK L. BENNARDO, P.E.
 #PE0046549
 03/01/2010
 No. 46549
ENGINEERING EXPRESS
 160 SW 12th Avenue, Suite 1066 F OF
 DEERFIELD BEACH, FL 33442
 PH: (954) 354-0660 FAX: (954) 354-0443
 WWW.ENGLXP.COM
 CERT. OF AUTH. #8888
 A FRANK L. BENNARDO, P.E., INC. INNOVATION

LUMIGLASS, INC.
 601 N.W. 35th Street, Suite 100 • Boca Raton, FL 33431
 (561) 750-2300 • Fax: (561) 750-8711
 ALUMIWALL 4500 SERIES STOREFRONT SYSTEM
 LARGE MISSILE IMPACT RESISTANT
 FLORIDA STATEWIDE APPROVAL

REMARKS	DRWN	CHKD	DATE
INIT ISSUE	CL	FBL	02/18/04
2004 FBC	CL	FLB	09/22/05
ADDL GLAZING OPTION	KL	CL	07/09/07
2007 FBC	AVL	CL	12/19/08
REV. PER ADDL TESTING	KL	FLB	03/01/10

THIS DOCUMENT IS THE PROPERTY OF ENGINEERING EXPRESS AND SHALL NOT BE REPRODUCED, COPIED, TRANSMITTED, OR OTHERWISE DISSEMINATED WITHOUT THE WRITTEN PERMISSION OF ENGINEERING EXPRESS. ANY UNAUTHORIZED USE OF THIS DOCUMENT IS NOT PERMITTED AND WILL BE PROSECUTED TO THE FULL EXTENT OF THE LAW.

COPYRIGHT ENGINEERING EXPRESS
 04-ALU-0013
 SCALE: 06
 PAGE DESCRIPTION:

F:\01 Project Files\Alumiglass (ALU)\2004 Jobs\04-015-0013 Alumiwall 4500\04-015-013_06a Alumiwall 4500 Storefront_LM1 (FSA).dwg
 03/01/2010 - 5:17pm
 kaibh

TABLE 1 MAXIMUM ALLOWABLE PRESSURE PER EACH BAY WITHOUT FULL VERTICAL REINFORCEMENT

MAX. BAY WIDTH	MAX. FRAME HEIGHT	NO HORIZ MULLION ON EITHER SIDE OF VERTICAL MULLION	HORIZ MULLION ON ONLY ONE (1) SIDE OF VERTICAL MULLION	HORIZ MULLIONS ON BOTH SIDES OF VERTICAL MULLIONS
36"	96"	+/- 65.0 psf	+/- 65.0 psf	+/- 65.0 psf
48"	96"	+/- 65.0 psf	+/- 65.0 psf	+/- 62.3 psf
	93"	+/- 65.0 psf	+/- 65.0 psf	+/- 65.0 psf
60"	76"	+/- 65.0 psf	+/- 65.0 psf	+/- 65.0 psf
72"	64"	+/- 65.0 psf	+/- 65.0 psf	+/- 65.0 psf
84"	54"	+/- 65.0 psf	+/- 65.0 psf	+/- 65.0 psf
96"	48"	+/- 65.0 psf	+/- 65.0 psf	+/- 65.0 psf

ALLOWABLE PRESSURE TABLE 1 NOTES:

1. NO LINEAR INTERPOLATION IS ALLOWED FOR SPANS OR CONDITIONS OTHER THAN THOSE SHOWN IN ALLOWABLE PRESSURE TABLES.
2. "BAY WIDTH" DENOTES MAX WIDTH BETWEEN VERTICAL MULLIONS.

TABLE 2 MAXIMUM ALLOWABLE PRESSURE PER EACH BAY WITH FULL VERTICAL REINFORCEMENT

MAX. BAY WIDTH	MAX. FRAME HEIGHT	NO HORIZ MULLION ON EITHER SIDE OF VERTICAL MULLION	HORIZ MULLION ON ONLY ONE (1) SIDE OF VERTICAL MULLION	HORIZ MULLIONS ON BOTH SIDES OF VERTICAL MULLIONS
36"	96"	+/- 80.0 psf	+/- 80.0 psf	+/- 80.0 psf
48"	96"	+/- 78.5 psf	+/- 78.5 psf	+/- 78.5 psf
	93"	+/- 80.0 psf	+/- 80.0 psf	+/- 80.0 psf
60"	76"	+/- 79.3 psf	+/- 79.3 psf	+/- 79.3 psf
72"	64"	+/- 78.5 psf	+/- 78.5 psf	+/- 78.5 psf
84"	54"	+/- 79.7 psf	+/- 79.7 psf	+/- 79.7 psf
96"	48"	+/- 78.5 psf	+/- 78.5 psf	+/- 78.5 psf

ALLOWABLE PRESSURE TABLE 2 NOTES:

1. NO LINEAR INTERPOLATION IS ALLOWED FOR SPANS OR CONDITIONS OTHER THAN THOSE SHOWN IN ALLOWABLE PRESSURE TABLES.
2. "BAY WIDTH" DENOTES MAX WIDTH BETWEEN VERTICAL MULLIONS.
3. DESIGN PRESSURES INDICATED IN TABLE 2 ARE PERMISSIBLE ONLY IF ALL VERTICAL MEMBERS HAVE FULL VERTICAL REINFORCEMENT.

ANCHOR SCHEDULE

	SUBSTRATE	EMBEDMENT DEPTH	MINIMUM SPACING	MIN. EDGE DISTANCE
3/8" HILTI KWIK BOLT II EXPANSION ANCHOR	CONC / GROUT- FILLED BLOCK (W/ OR W/O WOOD BUCK)	2 1/2"	2 1/2"	4"
3/8-16 SAE GRADE 2 STEEL SELF-TAPPING METAL SCREW	1/8" MIN THICK A36 STEEL (WITH OR WITHOUT BUCK)	SEE ANCHOR NOTE 7	2 1/2"	2"
#12 MEDIUM DUTY ITW TEKS SCREW	MIN 16ga STEEL (NO WOOD BUCK)	SEE ANCHOR NOTE 7	2 1/2"	2"
3/8" REDHEAD LARGE DIAMETER TAPCON - "LDT"	CONC / GROUT- FILLED BLOCK (WITH OR WITHOUT WOOD BUCK)	2 1/2"	3"	4"
3/8" LAG SCREW	WOOD (OR WOOD BUCK)	3 1/2"	1 1/2"	2 1/2"
#12 MEDIUM DUTY ITW TEKS SCREW	MIN 16ga STEEL (WITH WOOD BUCK)	SEE ANCHOR NOTE 7	2 1/2"	2"

ANCHOR NOTES:

1. ANCHOR TYPES SHALL BE PER ANCHOR SCHEDULE.
2. CONCRETE SHALL BE 3000 psi MIN COMPRESSIVE STRENGTH. GROUT-FILLED BLOCK SHALL BE ASTM C-90 BLOCK WITH MIN 2000 psi GROUT.
3. WOOD BUCKS AND/OR SUBSTRATES SHALL BE "SOUTHERN PINE" GRADE 2 (G=0.55 MIN).
4. ANCHORS SHALL BE INSTALLED IN ACCORDANCE WITH MANUFACTURER'S RECOMMENDATIONS.
5. ANCHOR EMBEDMENT SHALL BE INTO BASE MATERIAL, EXCLUDING STUCCO OR OTHER WALL FINISH.
6. ANCHORS SHALL BE INSTALLED USING RESPECTIVE MINIMUM EMBEDMENT DEPTHS, SPACING, AND EDGE DISTANCE AS SHOWN IN ANCHOR SCHEDULE. REFERENCE ALL DETAILS ON SHEET 5 FOR SPACING DEPICTION.
7. ANCHORS FOR INSTALLATION TO STEEL SHALL HAVE FULL THREAD PENETRATION.
8. WOOD BUCKS (NOT BY ALUMIGLASS) SHALL BE ADEQUATELY ANCHORED TO TRANSFER ALL SUPERIMPOSED LOADS TO THE HOST STRUCTURE.

FRANK L. BENNARDI, P.E.
#BD046549

03/01/2010

ENGINEERING EXPRESS

160 SW 12th AVENUE, #1066 OF
DEERFIELD BEACH, FL 33442
PH: (954) 354-0660 FAX: (954) 354-0443
WWW.ENGLXP.COM

CERT. OF AUTH. #9885
A FRANK L. BENNARDI, P.E., INC. INNOVATION

LUMIGLASS, INC.

901 N.W. 35th Street, Suite 100 • Boca Raton, FL 33431
(561) 750-2300 • Fax: (561) 750-8711

ALUMIWALL 4500 SERIES STOREFRONT SYSTEM
LARGE MISSILE IMPACT RESISTANT
FLORIDA STATEWIDE APPROVAL

REMARKS	DRWN	CHKD	DATE
INIT ISSUE	CL	FBL	02/18/04
2004 FBC	CL	FLB	09/22/05
ADD'L GLAZING OPTION	KL	CL	07/09/07
2007 FBC	AML	CL	12/19/08
REV. PER ADD'L TESTING	KL	FLB	03/01/10

THIS DOCUMENT IS THE PROPERTY OF ENGINEERING EXPRESS AND SHALL NOT BE REPRODUCED OR TRANSMITTED IN ANY FORM OR BY ANY MEANS, ELECTRONIC OR MECHANICAL, INCLUDING PHOTOCOPYING, RECORDING, OR BY ANY INFORMATION STORAGE AND RETRIEVAL SYSTEM. PERMISSION IS GRANTED TO THE USER TO MAKE A COPY OF THIS DOCUMENT FOR PERSONAL USE ONLY. ALL OTHER RIGHTS ARE RESERVED.

COPYRIGHT ENGINEERING EXPRESS

04-ALU-0013

SCALE: 1/8" = 1'-0"

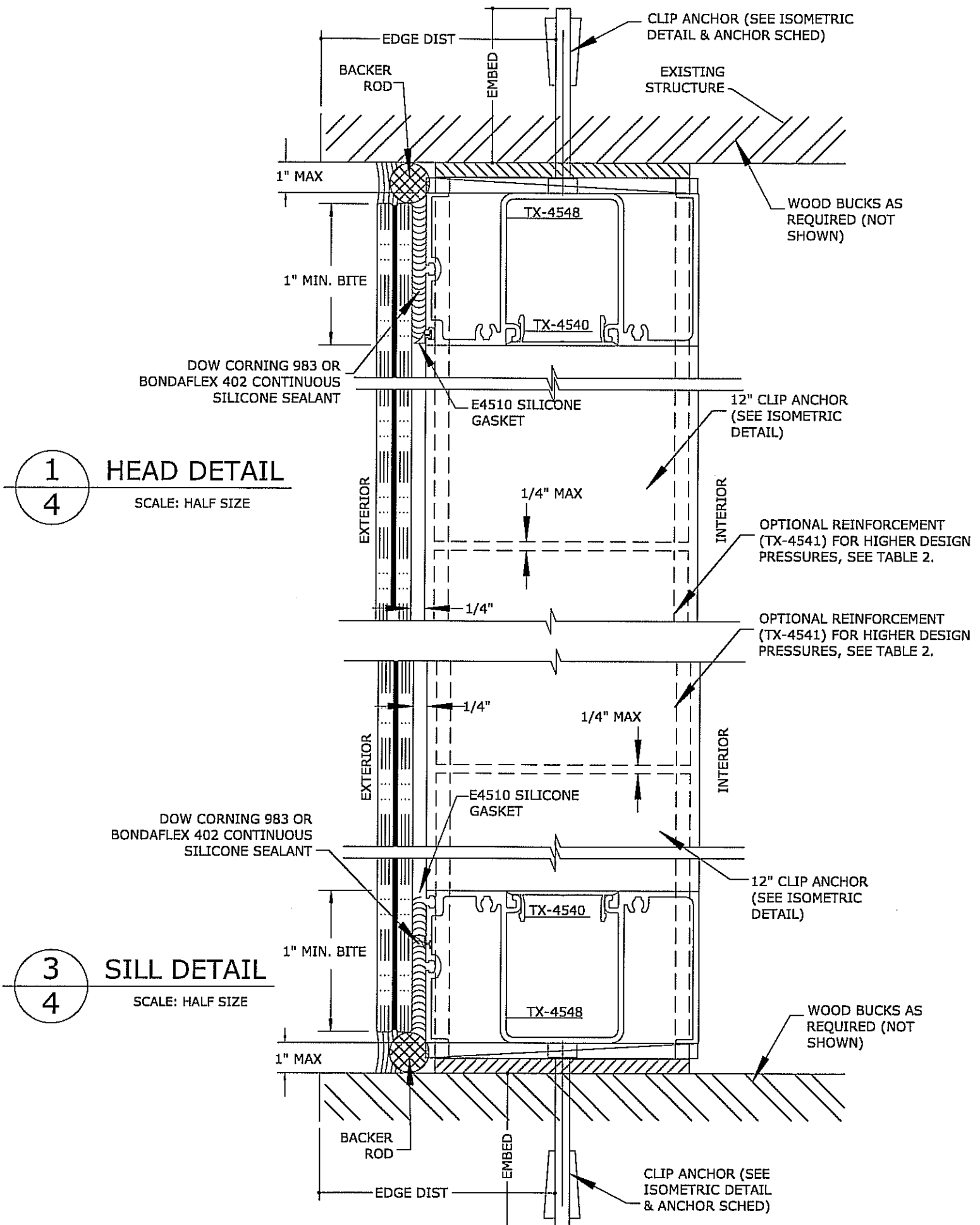
PAGE DESCRIPTION:

3

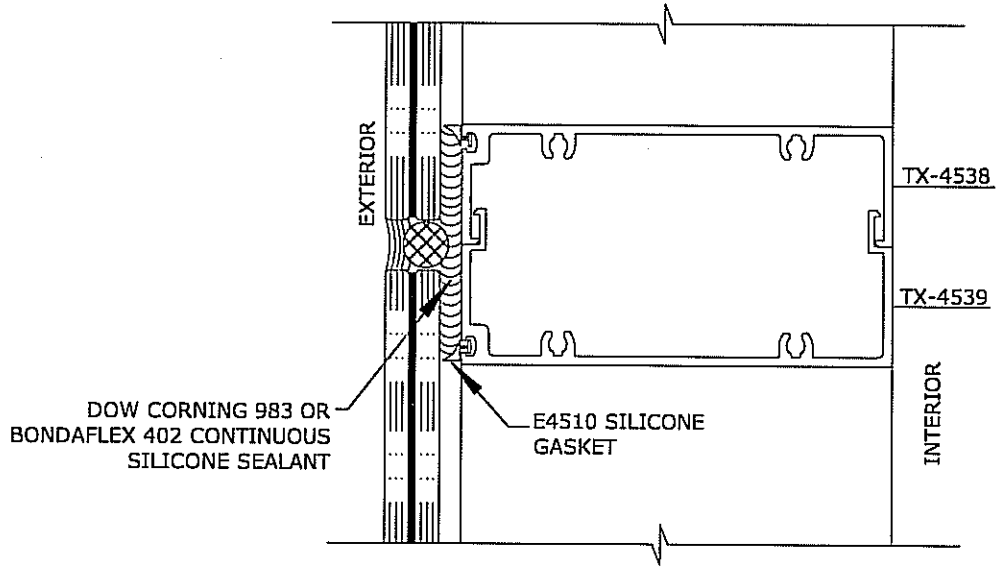
F:\01 Project Files\Alumiglass (ALU)\2004 Jobs\04-015-0013 Alumiwall 4500 Storefront, LM (FSA).dwg

03/01/2010 - 5:17pm

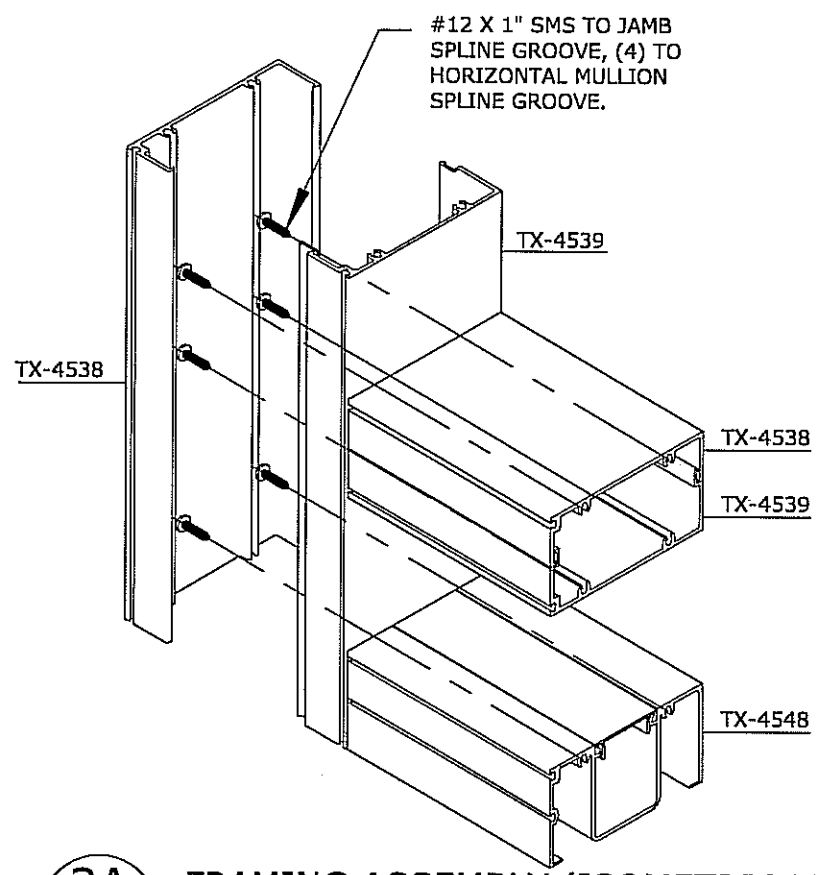
kelih



1
4 HEAD DETAIL
SCALE: HALF SIZE



2
4 INTERMULLION DETAIL
SCALE: HALF SIZE



3A
4 FRAMING ASSEMBLY (ISOMETRIC VIEW)
SCALE: N.T.S.

FRANK L. BENNARDO, P.E.
00046549
03/01/2010
PROFESSIONAL ENGINEER
STATE OF FLORIDA
160 SW 12th AVENUE, #106
DEERFIELD BEACH, FL 33442
PH: (954) 354-0660 FAX: (954) 354-0443
WWW.ENGEXP.COM
CERT. OF AUTH. #9885
A FRANK L. BENNARDO, P.E., INC. INNOVATION

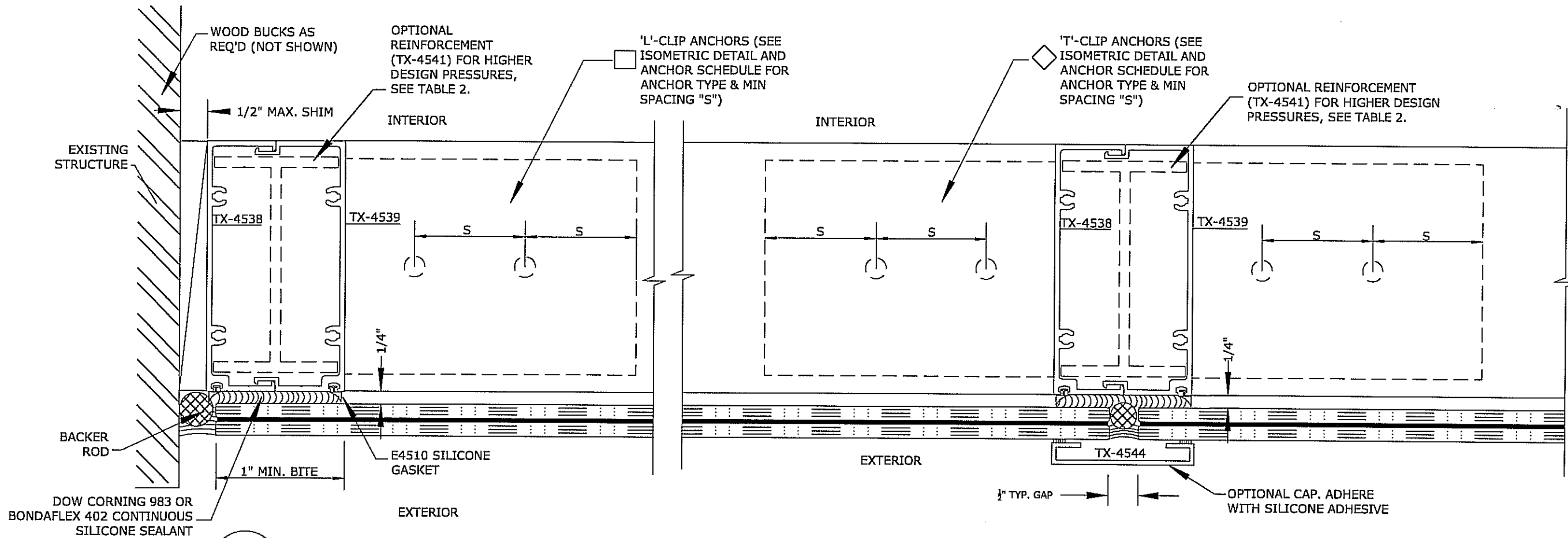
LUMIGLASS, INC.
901 N.W. 36th Street, Suite 100 • Boca Raton, FL 33431
(861) 750-2300 • Fax: (861) 750-8711
ALUMIWALL 4500 SERIES STOREFRONT SYSTEM
LARGE MISSILE IMPACT RESISTANT
FLORIDA STATEWIDE APPROVAL

REMARKS	DRWN	CHKD	DATE
INIT ISSUE	CL	FLB	02/18/04
2004 FBC	CL	FLB	09/22/05
ADD'L GLAZING OPTION	KL	CL	07/09/07
2007 FBC	AML	CL	12/19/08
REV. PER ADD'L TESTING	KL	FLB	03/01/10

THIS DOCUMENT IS THE PROPERTY OF ENGINEERING EXPRESS AND SHALL NOT BE REPRODUCED IN WHOLE OR IN PART WITHOUT WRITTEN CONSENT OF THE CERTIFYING ENGINEER. ALTERATIONS, ADDITIONS, INCLUSIONS, OR OTHER MODIFICATIONS TO THIS DOCUMENT ARE NOT PERMITTED AND INVALIDATE THIS CERTIFICATION.

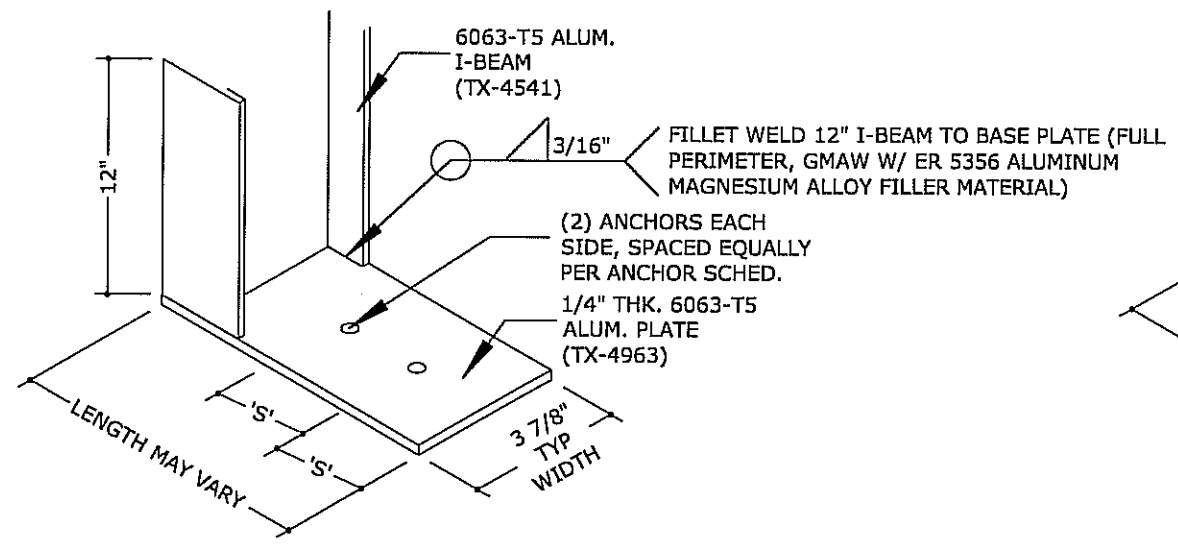
COPYRIGHT ENGINEERING EXPRESS
04-ALU-0013
SCALE: 06
PAGE DESCRIPTION:
4

F:\01 Project Files\Alumiglass (ALU)\2004 - Jobs\04-015-0013 Alumiwall 4500\04-015-013_06a Alumiwall 4500 Storefront_LMI (FSA).dwg
03/01/2010 - 5:17pm
kelih

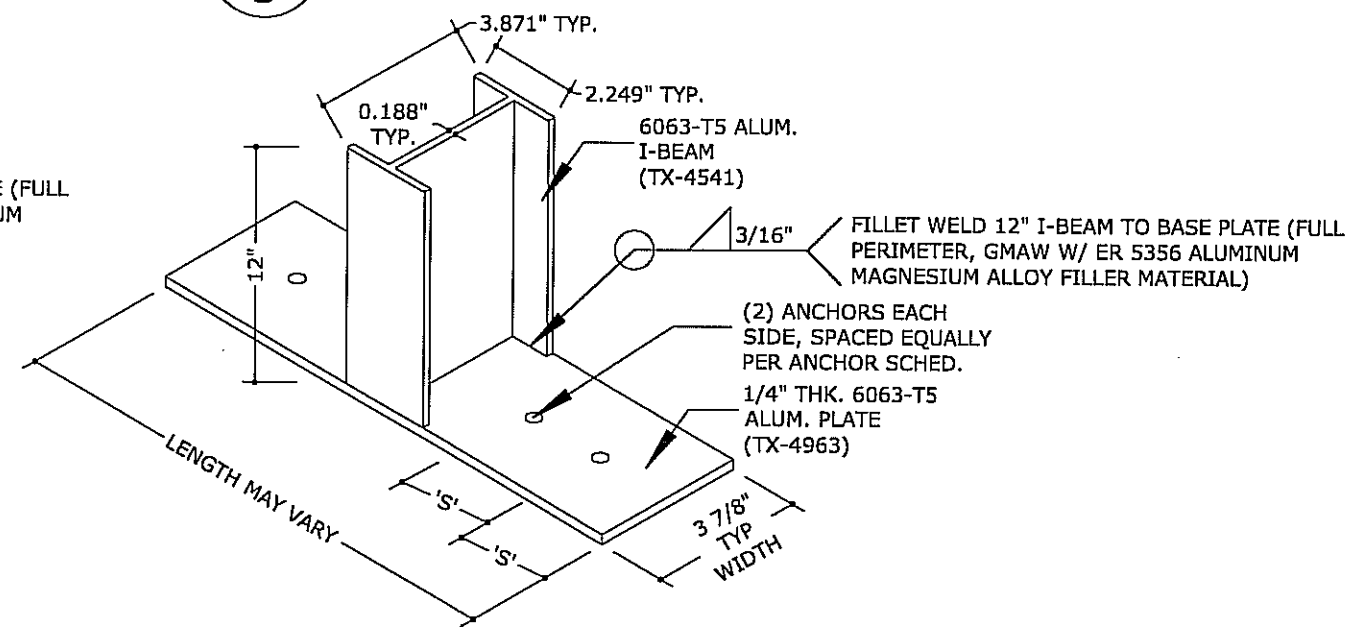


4
5 **JAMB DETAIL**
SCALE: HALF SIZE

6
5 **INTERMEDIATE MULLION**
SCALE: HALF SIZE



7
5 **L- ANCHORS (ISOMETRIC VIEW)**
(AT HEAD & SILL TYP.)
SCALE: N.T.S.



8
5 **T- ANCHORS (ISOMETRIC VIEW)**
(AT HEAD & SILL TYP.)
SCALE: N.T.S.

FRANK L. BENNARDO, P.E.
P.E. 00046549

03/01/2010
46549

ENGINEERING EXPRESS
STATE OF FLORIDA
160 SW 12th AVENUE, #106
DEERFIELD BEACH, FL 33442
Ph: (954) 354-0660 Fax: (954) 354-0943
WWW.ENGGEXP.COM/WEB

CERT. OF AUTH. #8805
A FRANK L. BENNARDO, P.E., INC. INNOVATION

LUMIGLASS, INC.
901 N.W. 25th Street, Suite 100 • Boca Raton, FL 33431
(561) 750-2300 • Fax (561) 750-8711

ALUMIWALL 4500 SERIES STOREFRONT SYSTEM
LARGE MISSILE IMPACT RESISTANT
FLORIDA STATEWIDE APPROVAL

REVISIONS	DATE	BY	CHKD
INIT ISSUE	02/18/04	CL	FLB
2004 FBC	09/22/05	CL	FLB
ADD'L GLAZING OPTION	07/09/07	KL	CL
2007 FBC	12/19/08	AML	CL
REV. PER ADD'L TESTING	03/01/10	KL	FLB

THIS DOCUMENT IS THE PROPERTY OF ENGINEERING EXPRESS AND SHALL NOT BE REPRODUCED IN WHOLE OR PART WITHOUT WRITTEN CONSENT OF THE COMPANY. REVISED EDITIONS WILL BE PROMPTLY AVAILABLE TO OUR CUSTOMERS.

04-ALU-0013
SCALE: 06
PAGE DESCRIPTION:

F:\01 Project Files\Alumiglass (ALU)\2004 Jobs\04-015-0013 Alumiwall 4500\04-015-013_06a Alumiwall 4500 Storefront_LM1 (FSA).dwg